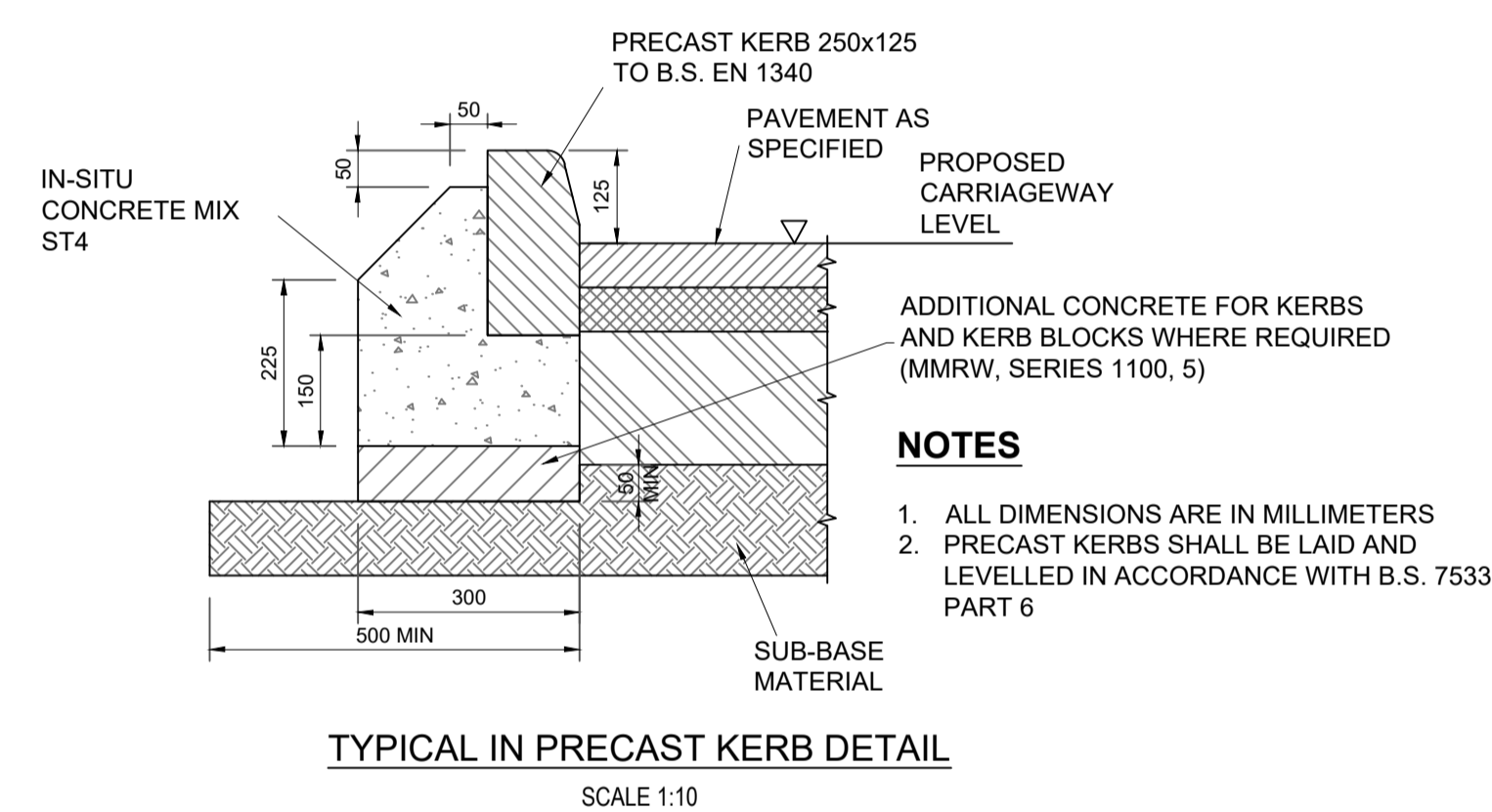
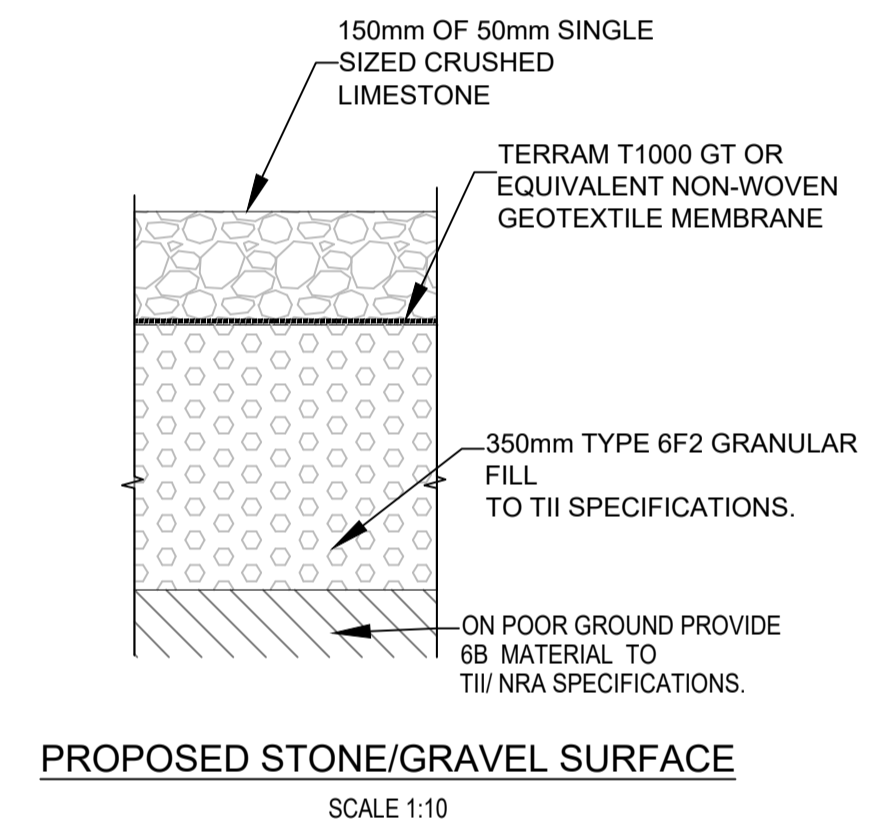
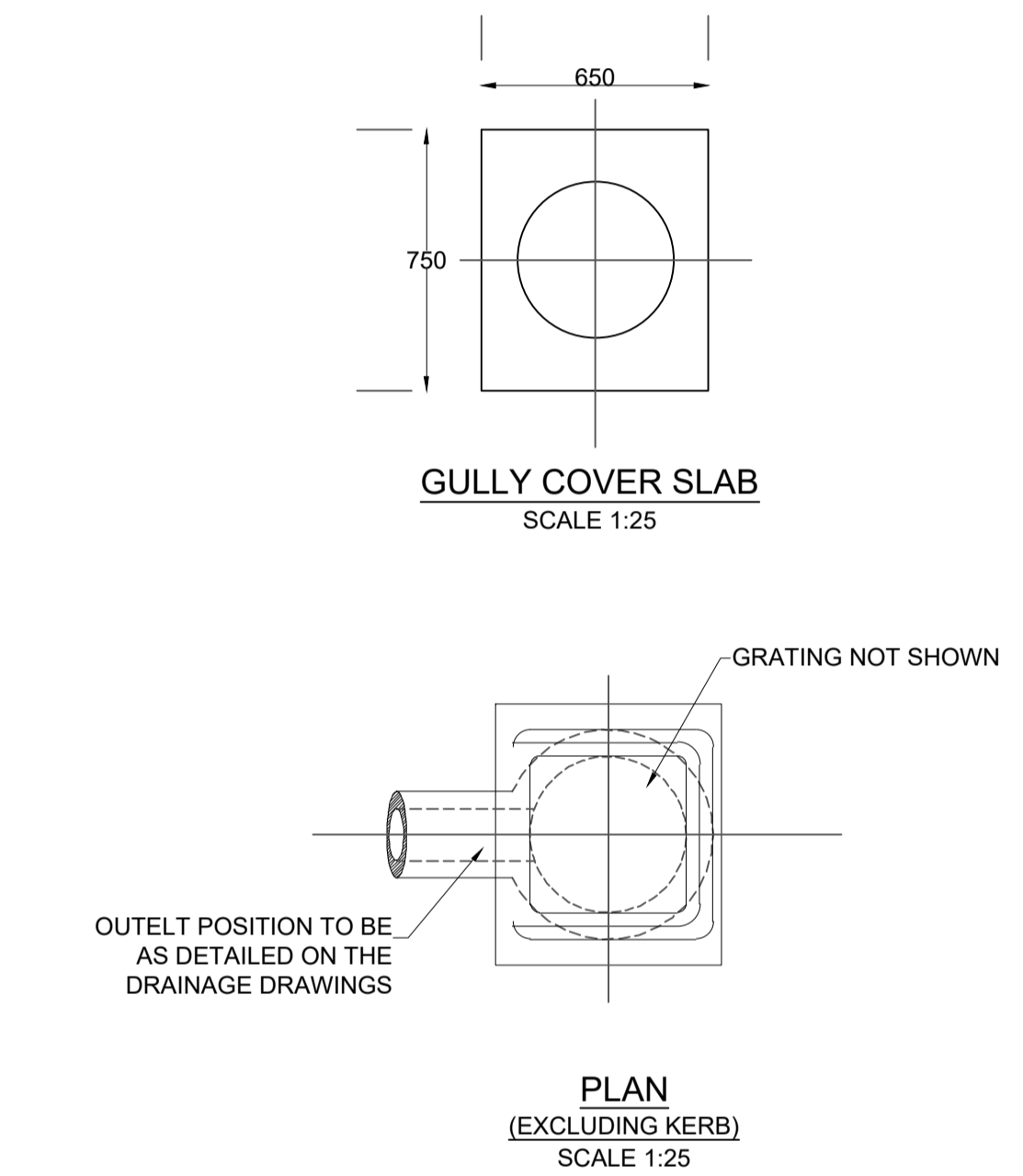
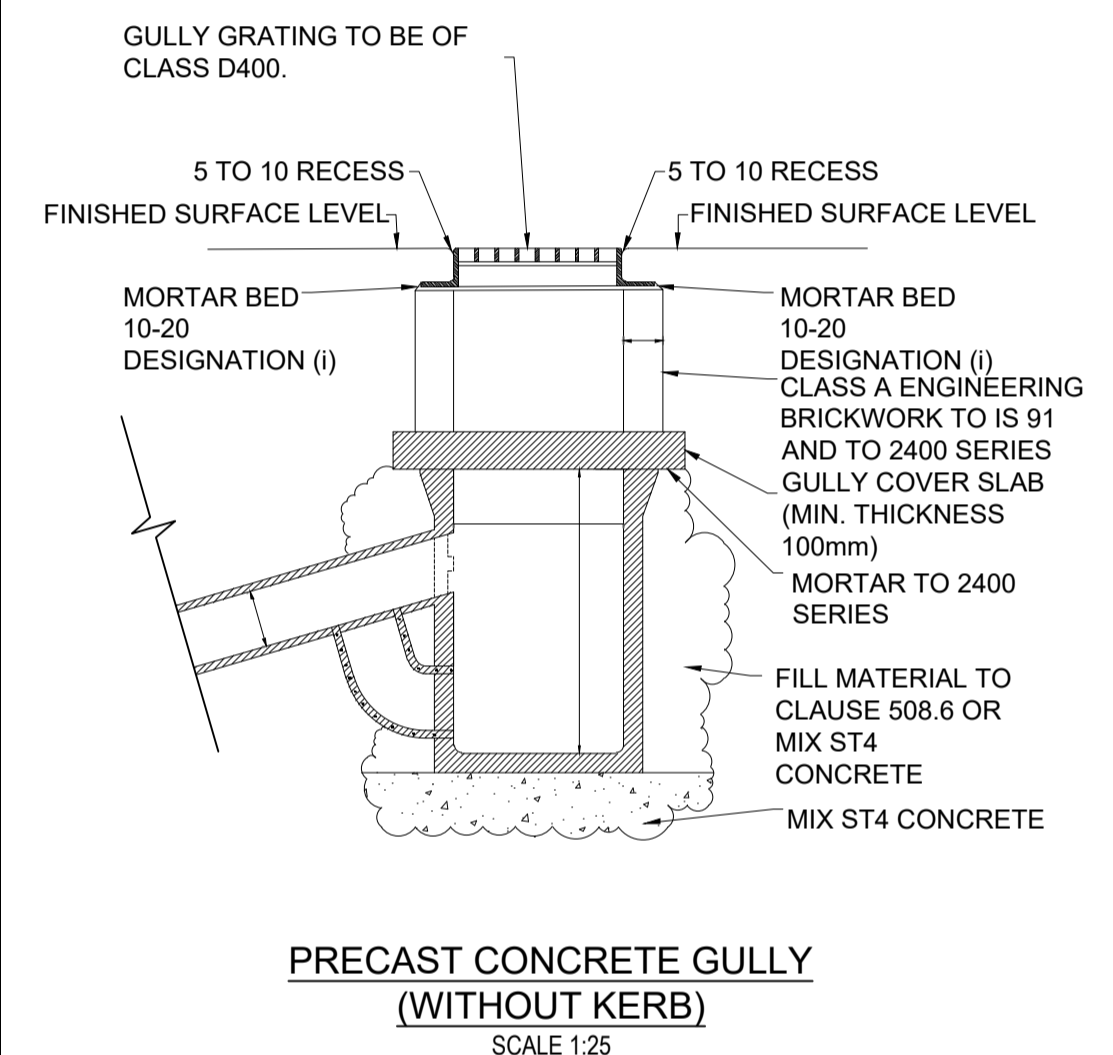
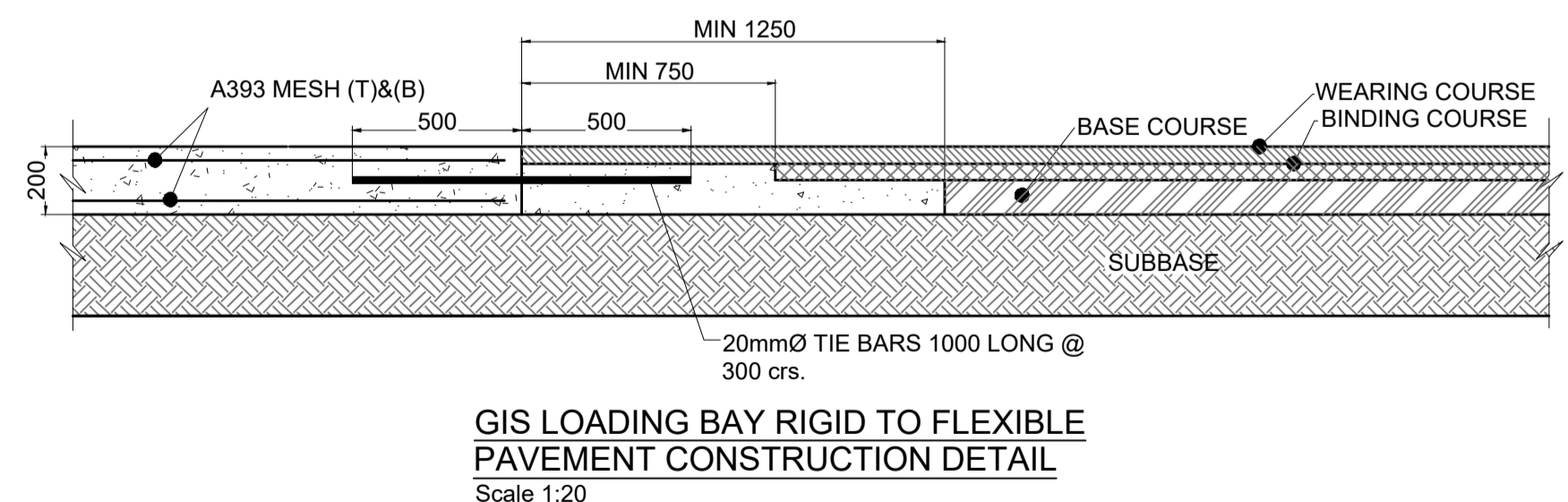


- NOTES**
1. IN SITU CONCRETE KERBS SHALL COMPLY WITH THE RECOMMENDATIONS OF B.S. 5931.
 2. KERBS SHALL BE PROTECTED FROM THE EFFECTS OF ADVERSE WEATHER UNTIL CURED.



- NOTES**
1. ALL DIMENSIONS ARE IN MILLIMETERS
 2. PRECAST KERBS SHALL BE LAID AND LEVELLED IN ACCORDANCE WITH B.S. 7533 PART 6

- GULLY NOTES:**
1. ALL DIMENSIONS ARE IN MILLIMETERS EXCEPT WHERE STATED.
 2. THE MINIMUM DEPTH FROM THE TOP OF THE GRATING TO THE TOP OF THE GULLY OUTLET IS TO BE 750 WHEN THE CONNECTING PIPE IS UNDER A CARRIAGEWAY OR A HARD SHOULDER AND 600 ELSEWHERE.
 3. PRECAST CONCRETE GULLIES AND COVER SLABS SHALL BE TO IS EN 1917 OR BS 5911-6.
 4. WHERE THE GULLY HAS A TRAP THE STOPPERS SHALL COMPLY WITH THE REQUIREMENTS OF BS 5911-4 AND IS EN 1917.



Rev	Description	Drawn	Checked	Date
P03	SID ISSUE	DM	PM	03.11.2020
P02	EIRGRID REVIEW	DM	PM	13.10.2020
P01	FOR DISCUSSION	DM	PM	28.08.2020

Clifton Scannell Emerson Associates
Clifton Scannell Emerson Associates Limited
Consulting Engineers,
Safford Lodge,
Castledawson Avenue,
Blackrock, Co. Dublin,
Ireland, A94 P768
T: +353 1 288 5006
F: +353 1 283 3466
E: info@csea.ie
W: www.csea.ie

Client
CAP DEVELOPMENTS LLC

Project
OLDBRIDGE 110KV SUBSTATION

Dwg. Title
TYPICAL ROAD DETAILS

Drawn By DM **Date** OCTOBER 2020 **20_057**

Checked By PM **Scale** AS INDICATED @ A1 **CSEA Job No.**

Project Code	Originator	Zone/Phase	Level	Type	Role	Dwg. No.
DUB062HV - CSE - 00 - XX - DR - C - 2152						

S2 SUITABLE FOR INFORMATION
Status Code Suitability Description

P03 PLANNING
Revision Project Status